



OVERVIEW

With its clean lines and superior finish options, the Rhobus stands and trolleys answers all the needs of the corporate user.

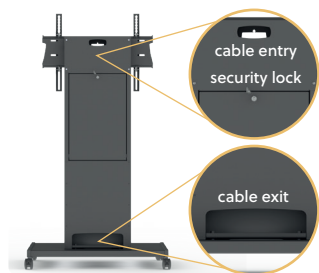
Choose from the elegant single screen version through to multi-screen units to support the latest and best in corporate communications.

A wide range of accessories are available to enhance the collaborative experience, including glass shelves and video conferencing mounts



KEY FEATURES

- Easy access to 440 x 470 x 80mm mast housing via lockable pull-down door.
- Single and twin screen variations with a variety of installation options.
- PowaLift height adjustable versions are also available.
- Built-in screen levelling.
- Caters for a range of VESA patterns to accommodate multiple screen sizes.
- Compatible with our sound/video bar and video conference camera mounts.
- Built in power socket included as standard.



Lockable AV equipment storage and discreet cable management.



Easily swap-over from wheeled base to static feet.



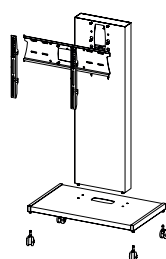
Most versions are available in a single box solution.



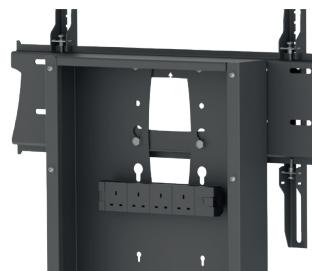
Universal screen mount is incorporated as standard.



Wide range of video conference accessories available.



Quick and easy to assemble.



Built in power socket for simple and neat connectivity.



Most versions are available in Sinterflex Black or White.



RH100

Single Screen Rhobus Trolley
(PZX1 as standard)

Dimensions (mm)	1576h 950w 550d
Height Screen Centre	1480
Weight (kg)	60.1
Screen Size	33 - 70"
VESA Fixings	200x200 / 600x400
Weight Capacity (kg)	80
Colour Options	■ □
Cost £ (exc. VAT)	1265.20



RH100-PZX5

Single Screen Rhobus Trolley
(PZX5 as standard)

Dimensions (mm)	1576h 950w 550d
Height Screen Centre	1480
Weight (kg)	60.9
Screen Size	33 - 75"
VESA Fixings	200x200 / 800x600
Weight Capacity (kg)	80
Colour Options	■ □
Cost £ (exc. VAT)	1265.20



RHBD100

Single Screen Rhobus Bolt Down
(PZX1 as standard)

Dimensions (mm)	1470h 650w 310d
Height Screen Centre	1370
Weight (kg)	45.5
Screen Size	33 - 70"
VESA Fixings	200x200 / 600x400
Weight Capacity (kg)	80
Colour Options	■ □
Cost £ (exc. VAT)	1096.50



RFWSH

Single Screen Rhobus Floor-to-Wall
(PZX1 as standard)

Dimensions (mm)	1710h 765w 207d
Height Screen Centre	1600
Weight (kg)	35.1
Screen Size	33 - 70"
VESA Fixings	200x200 / 600x400
Weight Capacity (kg)	80
Colour Options	■ □
Cost £ (exc. VAT)	1083.20



RH100-HD

Single Screen Heavy Duty
Rhobus Trolley (PX9 as standard)

Dimensions (mm)	1882h 1200w 660d
Height Screen Centre	1700
Weight (kg)	79.4
Screen Size	71 - 110"
VESA Fixings	300x300 / 1000x600
Weight Capacity (kg)	150
Colour Options	■ □
Cost £ (exc. VAT)	1780.60



RHBD100-HD

Single Screen Heavy Duty
Rhobus Bolt Down (PX9 as standard)

Dimensions (mm)	1775h 1070w 310d
Height Screen Centre	1600
Weight (kg)	56.7
Screen Size	71 - 110"
VESA Fixings	300x300 / 1000x600
Weight Capacity (kg)	150
Colour Options	■ □
Cost £ (exc. VAT)	1246.70



RFWSH-HD

Single Screen Heavy Duty Rhobus Floor-to-Wall (PX9 as standard)

Dimensions (mm)	1710h 1070w 207d
Height Screen Centre	1600
Weight (kg)	41.6
Screen Size	71 - 110"
VESA Fixings	300x300 / 1000x600
Weight Capacity (kg)	150
Colour Options	■ □
Cost £ (exc. VAT)	1157.30



RH200

Twin Screen Rhobus Trolley (PZX1 as standard)

Dimensions (mm)	1577h variedw 660d
Height Screen Centre	1470
Weight (kg)	variable
Screen Size	33 - 70"
VESA Fixings	200x200 / 600x400
Weight Capacity (kg)	35 per screen
Colour Options	■ □
Cost £ (exc. VAT)	1562.80



RH200-HD

Twin Screen Heavy Duty Rhobus Trolley (Integrated mount)

Dimensions (mm)	1940h 2663w 650d
Height Screen Centre	1900
Weight (kg)	75.8
Screen Size	71 - 86"
VESA Fixings	600x400 / 1000x600
Weight Capacity (kg)	50 per screen
Colour Options	■ □
Cost £ (exc. VAT)	2156.70



RH200-HDP

Twin Screen Heavy Duty Rhobus Stand (Integrated mount)

Dimensions (mm)	1831h 2663w 730d
Height Screen Centre	1800
Weight (kg)	109
Screen Size	71 - 86"
VESA Fixings	600x400 / 1000x600
Weight Capacity (kg)	50 per screen
Colour Options	■ □
Cost £ (exc. VAT)	2156.70



RFWSHHD200

Twin Screen Heavy Duty Rhobus Floor-to-Wall (Integrated mount)

Dimensions (mm)	1800h 2663w 231d
Height Screen Centre	1700
Weight (kg)	64.4
Screen Size	71 - 86"
VESA Fixings	600x400 / 1000x600
Weight Capacity (kg)	50 per screen
Colour Options	■ □
Cost £ (exc. VAT)	1796.30



RH200-UHD

Twin Screen Ultra Heavy Duty Rhobus Stand (Integrated mount)

Dimensions (mm)	2008h 3262w 730d
Height Screen Centre	1800
Weight (kg)	153.9
Screen Size	71 - 110"
VESA Fixings	variable
Weight Capacity (kg)	100 per screen
Colour Options	■ □
Cost £ (exc. VAT)	5828.00



RHPL100-HD

Single Screen Rhobus Powalift Trolley
(PZX9 as standard)

Dimensions (mm)	1980h 1200w 659d
Height Screen Centre	1084-1784
Weight (kg)	100.3
Screen Size	71 - 110"
VESA Fixings	300x300 / 1000x600
Weight Capacity (kg)	150
Colour Options	■
Cost £ (exc. VAT)	2170.80



RHPLFW

Single Screen Floor-to-Wall Rhobus
Powalift Trolley (PZX9 as standard)

Dimensions (mm)	1877h 1070w 400d
Height Screen Centre	982-1682
Weight (kg)	78.2
Screen Size	71 - 110"
VESA Fixings	300x300 / 1000x600
Weight Capacity (kg)	150
Colour Options	■
Cost £ (exc. VAT)	1909.35



RH400-HD

2x2 Screen Rhobus Trolley
(Integrated mount)

Dimensions (mm)	1974h 1800w 660d
Max. Screen Dims	680h 1420w
Weight (kg)	112.8
Screen Size	33 - 57"
VESA Fixings	200x200 / 600x400
Weight Capacity (kg)	35 per screen
Colour Options	■ □
Cost £ (exc. VAT)	2040.50



RHU

Rhobus Trolley Excluding Mount
(mount sold separately)

Dimensions (mm)	1576h 950w 550d
Height Screen Centre	n/a
Weight (kg)	54.8
Screen Size	n/a
VESA Fixings	n/a
Weight Capacity (kg)	80
Colour Options	■ □
Cost £ (exc. VAT)	1166.80

RELATED PRODUCTS



SBM1 / SBM9
Hook-On Sound Bar /
Video Bar Mount



VCMP
Hook-On Video Conference
Camera Mount



VCTS1 / VCTS9
Hook-On Twin Sound
Bar & VC Camera Mount



RHGS1
500w x 400d
Toughened Glass Shelf



RHGS2
780w x 390d
Toughened Glass Shelf



RHRACK
Internal Mast Rack for
RH100 & RH100-HD