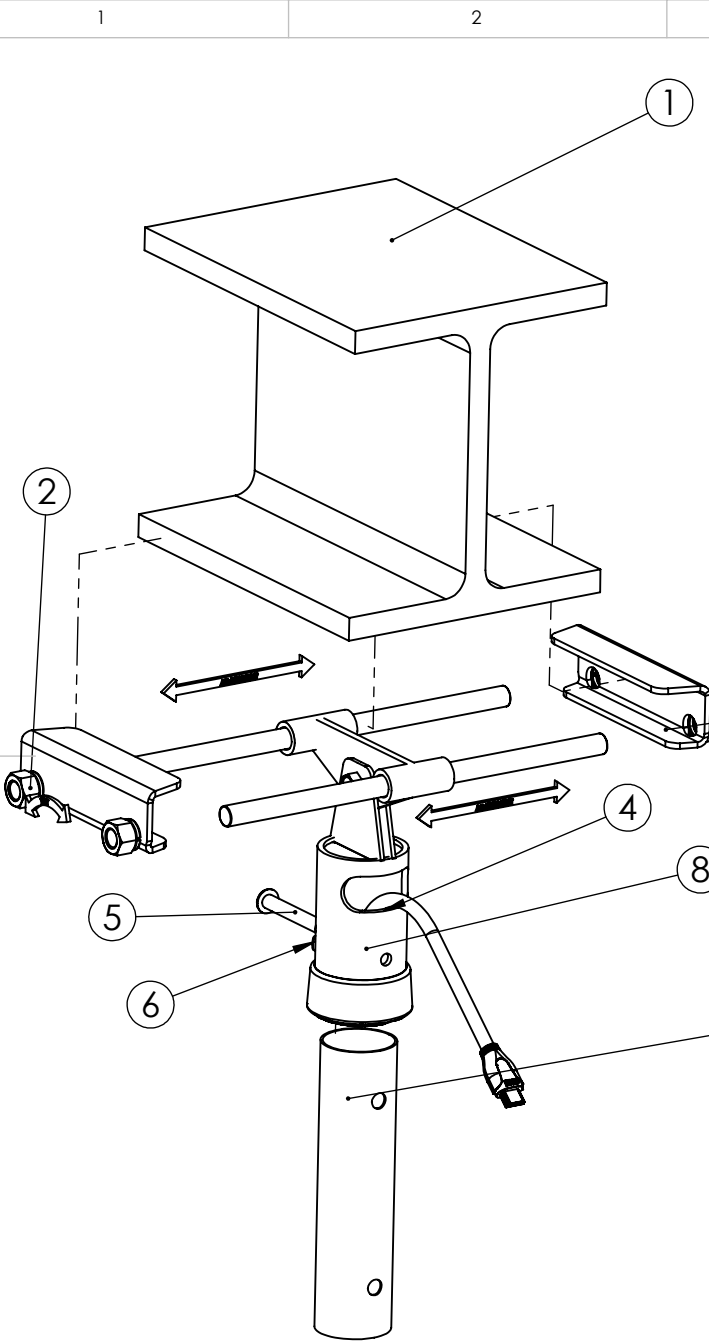
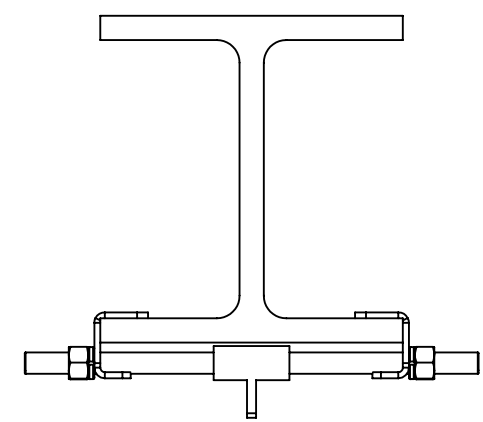


Bend Tool

Description		Gc25 Adjustable Girder Clamp 9 To 25Cm		
UNLESS OTHERWISE SPECIFIED: DIMENSIONS ARE IN MILLIMETERS		Mod Date	07/03/2016	REVISION
		Drawn Date:	10/04/2007	
SURFACE FINISH: Powder Coated		A-005		See Below - Fixings Required
DRAWN Ricky Clark		Material		DWG NO.
Unicol Engineering Green Road Oxford OX3 8EU		Gauge		
				GC25
				A4



- Instructions**
 Before starting validate that the bean is safe for a suspended load of at least 5 times the intended load including mounts
1. Slacken or remove end nuts and washer to allow end plates to expand fully ②
 2. Bring end flange plates into the bottom girder flange ③
 3. Tighten nuts and washers evenly to clamp sideways onto girder ②
 4. Route cables through aperture in socket ④ - ⑧
 5. Insert column and secure with safety through bolt ⑦ - ⑤
 6. Nip up socket set screws to remove play from vertical column ⑥



Description		Gc25 Adjustable Girder Clamp 9 To 25Cm			
UNLESS OTHERWISE SPECIFIED: DIMENSIONS ARE IN MILLIMETERS	Mod Date	07/03/2016	REVISION	Bend & Machine Number	
	Drawn Date:	10/04/2007	A-005		
SURFACE FINISH: Powder Coated	DRAWN Ricky Clark		Material	DWG NO. GC25	
	Unicol Engineering Green Road Oxford OX3 8EU		Gauge		

Bend V Tool

A4