

Pro G Series

Large-venue projectors with uncompromising image quality.

EPSON[®]
EXCEED YOUR VISION



Pro G7000W/NL | Pro G7100/NL | Pro G7200W/NL | Pro G7400U/NL

Pro G7500U/NL | Pro G7805/NL | Pro G7905U/NL



"We've tried just about every projector brand over the years, but Epson is the most impressive. We like the color and the brightness, but mainly the fact that, at any given price point, Epson projectors deliver the greatest visual impact."

— *Caleb Keener*
Electronics Supervisor
Pensacola Christian College

"We can now leave the curtains up and lights on while watching a video. This was never previously possible — the difference has been night and day. We can read the words on the screen in any lighting environment, and our movie nights are now better than ever."

— *Steven Seybold*
Technology Consultant
Applewood Community Church

"There's no situation that I'm confronted with where an Epson projector won't work, whether it's a very large-scale projection, small and intimate setting, or projecting a bigger image from a shorter distance. The lens shift capability of the projector lets me easily fit projections into a wide range of venues."

— *Paul Young*
Director
Silicon Valley Contemporary Fair

Premium large-venue
projectors from Epson.



Uncompromising Image Quality

3x Higher Color Brightness with Epson¹

Brilliant image quality requires high color brightness (color light output), and Epson® 3LCD projectors have 3x Higher Color Brightness than leading 1-chip DLP projectors¹.



One brightness measurement (lumens) is not enough.

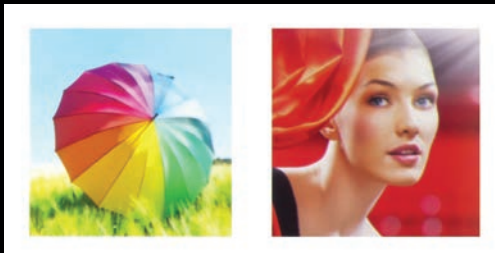
A projector's specification needs to show both high color brightness and high white brightness. If color brightness is lower than white brightness, images may be dark, dull and lose detail. If not provided, be sure to ask for a projector's color brightness specification.

3LCD, the #1 projection technology in the world, has:

- Both high color brightness and high white brightness
- 3 chips for up to 3x Higher Color Brightness² than DLP projectors
- 25% lower power consumption for lower energy costs³
- 25 years of road-tested reliability

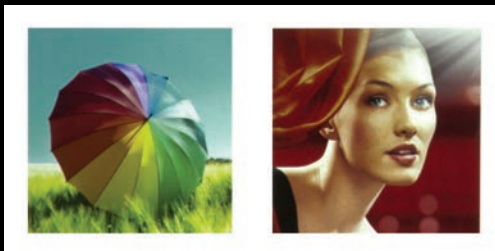


EPSON

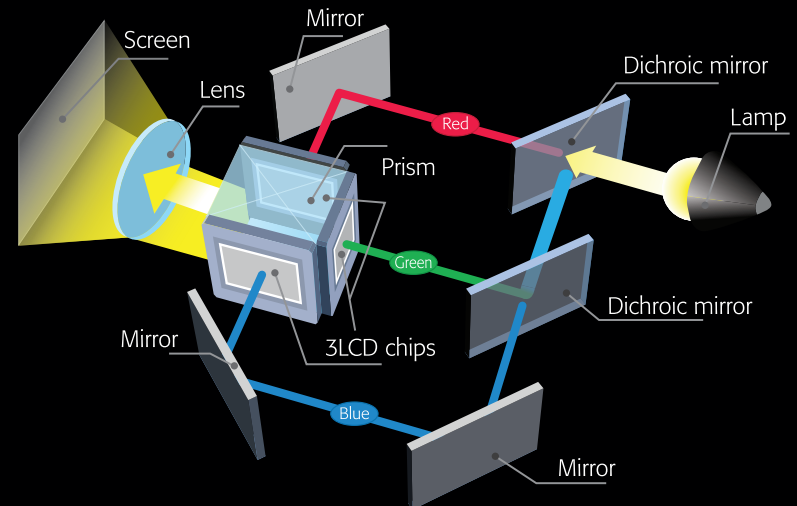


High color brightness and high white brightness

COMPETITOR



Color brightness significantly lower than white brightness



Actual photographs of projected images from an identical signal source. Price, resolution and white brightness are similar for both projectors (Epson 3LCD and 1-chip DLP competitor). Both projectors are set to their brightest mode.

4K Enhancement Technology

Revolutionary 4K Enhancement Technology⁴ accepts 4K input, allowing viewers to experience the most intricate details. This feature also enhances the 1080p signal for output that surpasses Full HD image quality, without visible stair-stepping or pixel gaps. From tiny text to the smallest architectural feature, you'll see every incredible detail.

Available on select models.



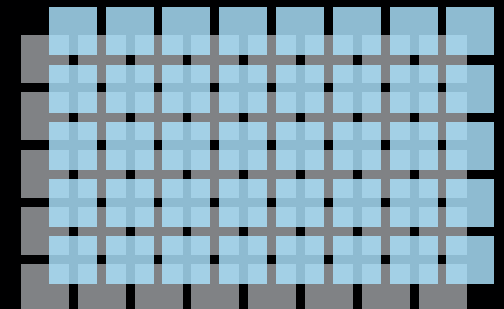
4K Enhancement Technology Off



4K Enhancement Technology On

Pixel Scaling

This feature shifts each pixel diagonally by 0.5 pixels to double the resolution from 2.3 million to 4.6 million pixels.



All projected images are simulated.

Advanced Edge Blending



All projected images are simulated.

Built-in Edge Blending technology is ideal for using multiple projectors to overlap images and project seamless, multi-screen, panoramic images — even on a curved surface, the ceiling, or the floor. Perfect for art galleries, digital signage and staging, this feature ensures uniform, seamless projection, with no bright spots where the overlap occurs.

Projection Mapping



All projected images are simulated.

Transform practically any object or setting into a dynamic visual display. From cars to landscapes to entire exteriors, there is almost no limit to the applications made possible by Projection Mapping — every surface can become a screen.

Reliable 24/7 Operation



All projected images are simulated.

Designed to operate 24/7, the Pro G Series is ideal for applications that require continuous projection. Delivering uniform brightness and exceptional, consistent image quality — 24/7/365 — Pro G Series projectors are an excellent choice for command centers, museums, storefronts and hotel lobbies, as well as digital signage in malls, airports, convention centers and more.

Outstanding Support — with Free Next-Business-Day Replacement Pro G Series projectors are backed by one of the world's finest customer care programs, including a limited warranty of 20,000 hours of usage or 3 years, whichever comes first, plus toll-free support. (Free Next-Business-Day replacement⁵ to the U.S. or Canada. Arrives with a postage-paid return shipping label.)

Flexible Projection

360-degree projection

Take advantage of every surface in the room. Pro G Series projectors can be rotated 360 degrees in any direction for off-axis positioning flexibility, making them ideal for a range of applications including simulators, digital signage and command centers. Project images on the ceiling, on the floor, or as part of a rear projection system. Epson technology keeps the projector running without compromising performance.



Portrait Mode

A creative solution for window advertisements, fashion shows, live performances and virtually any setting requiring projection onto tall, vertical screens or surfaces, Portrait Mode enables you to install the projector on its side for displaying digital signage, screening images or projecting video with portrait orientation. (Lamp life is reduced in Portrait Mode.)



All projected images are simulated.

Corner-wall Projection



All projected images are simulated.

Project on horizontal or vertical walls to create impressive, out-of-the-box experiences. You can also choose to use Edge Blending and Corner-wall Projection at the same time.

Rental and Staging



All projected images are simulated.

Epson Pro G Series projectors were designed with the installer in mind, featuring:

- 10 optional motorized lenses with lens position memory
- An electrostatic filter to prevent dust particles from entering the projector
- A wide array of connectivity including HDBaseT™, DVI and HDMI®
- Flexible installation, including 360-degree projection and Portrait Mode

Wide Portfolio of Powered Lens Options

Total of 10 Lenses to Choose From

The Pro G Series offers increased installation flexibility with a total of 10 optional lenses that allow users to choose the motorized lens most suited for their environment. Choose from a variety of ranges including ultra short-throw, short-throw, middle-throw and long-throw lenses. A tool-free, quick-release lever enables fast, easy lens exchange.

For details, visit epson.com/largevenue



Powered Lens Shift

Epson's advanced projection technology enables a wide range of lens shift capabilities for extraordinary installation flexibility. Pro G Series projectors feature an incredible range of up to ± 67 percent on the vertical axis and up to ± 30 percent on the horizontal axis (depending on the lens). Users can easily operate the lens shift functions using the remote control, the projector control panel, or control commands.

Lens Position Memory

Powered lens memory means users can preset up to 10 positions for zoom, focus, lens shift and projection size for instant switching between installations. With the push of a button, recall the position of your previous installation for fast, efficient setup.

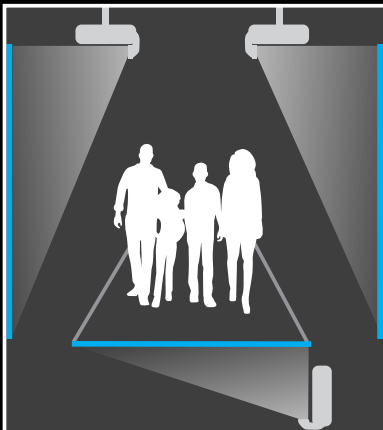
Lens	Part Number	Wide – Tele	Throw Ratio Range											
			1.0	2.0	3.0	4.0	5.0	6.0	7.0	8.0	9.0	10.0		
Ultra short	V12H004X01	0.35												
Short #1	V12H004U03	0.65 - 0.78	■											
Short #2	V12H004U04	0.87 - 1.06	■											
Wide #1	V12H004W05	1.04 - 1.46		■										
Wide #2	V12H004W06	1.63 - 2.22		■	■									
Middle #1	V12H004M08	1.45 - 2.32		■	■									
Middle #2	V12H004M09	2.15 - 3.49			■	■								
Middle #3	V12H004M10	3.31 - 5.07				■	■							
Middle #4	V12H004M11	4.84 - 7.39					■	■	■					
Long	V12H004L08	7.20 - 10.12								■	■	■	■	

Ultra Short-throw Lens

Transform your Pro G Series projector into an ultra short-throw projector. Featuring a 0.35 throw ratio and minimal offset, this lens allows you to install the projector just inches from the screen or wall and still get large, clear, crisp projection. It's an ideal solution for installation in narrow spaces and rear-projection applications. Plus, lens shift and zoom give you even more flexibility when you need it.



All projected images are simulated.



Front projection from above and rear projection from below the floor surface create an immersive experience.



Project from above or below for a dynamic window display.

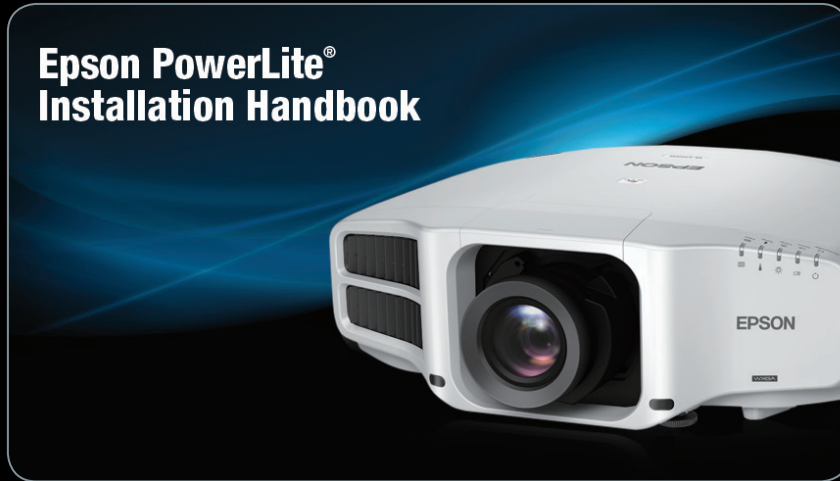


Installation Tools

Epson knows that choosing, installing and using a projection device correctly is very important. We have collected helpful tips and resources to make the process easier. For additional information on documentation and installation tools, visit epson.com/largevenue

Online Installation Handbook

Find a step-by-step guide to help with the most challenging installation situations at epson.com/installhandbook



- Throw distance calculations
- Remote control information
- CAD drawings
- Environmental requirements
- Mounting information
- Maintenance information
- Connectivity information
- Optional accessories
- RS-232 control codes

Throw Distance Calculator

To determine which projector is right for your room size, use the throw distance calculator at epson.com/distancecalculator-LV



You can interactively change the following attributes and find the right projector solution for your application:

- Projector model
- Screen size
- Lens type
- Screen positioning on the wall
- Lens shift
- Aspect ratio
- Projection distance

For BIM content, go to seek.autodesk.com/epson

Setting Cloning

Copy the menu settings from one projector to one or more other projectors of the same model. This allows for quick duplication of projector menu settings in a batch setup operation. (Does not copy network settings.)



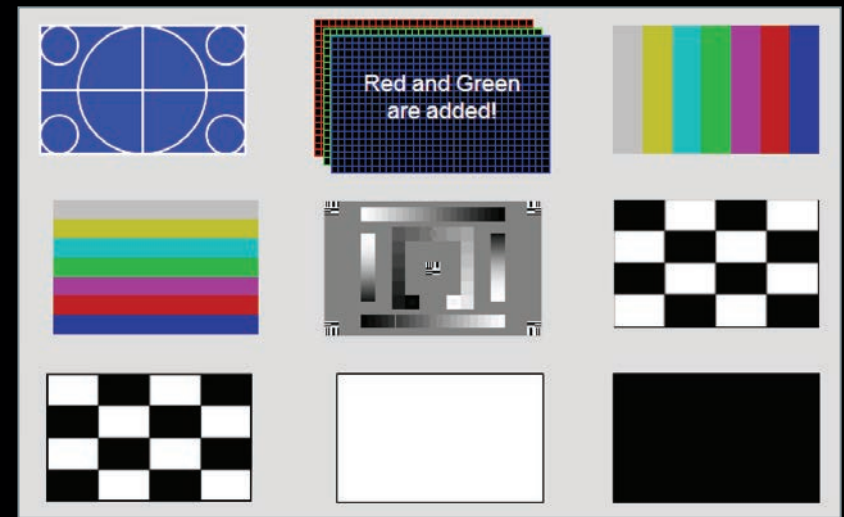
Firmware Updates

Perform firmware updates via:

- USB connection from a PC
- Over the network
- Cloning — copy settings (user logo, brightness, etc.) between installations

Convenient Test Patterns

Make sure your presentation is set up correctly before you begin. The Pro G Series features nine test patterns including linearity, color reproduction, bleeding and tone production. It even detects distortion.



Seamless Integration Tools

Compatible with Leading Control Systems

Pro G Series projectors are compatible with Crestron® RoomView®, AMX®, Extron® XTP® and Control4® Simple Device Discovery Protocol (SDDP) to ensure easy integration with existing systems.



Emulation Mode

Easily integrate your Epson Pro G Series projector into existing networked projection control systems using Emulation Mode, which allows the projector to accept Sony®, Panasonic®, Mitsubishi® and NEC® codes⁶. Simply install the projector and choose the control set that you want the projector to emulate. This convenient feature reduces installation time and cost, as installers do not have to reprogram the system with Epson codes.



All projected images are simulated.

Advanced Connectivity

HDBaseT and Diverse Connectivity

Connect with virtually any system — Pro G Series projectors include HDBaseT, HDMI, DVI-D, VGA, BNC and LAN inputs. Cutting-edge HDBaseT technology simplifies installation with just one CAT-5/6 cable carrying Full HD video, audio, network and control commands. And, its 328-foot cable length accommodates large venues. There's no need for additional cables, signal repeaters or added labor.



Optional HDBaseT Transmitter

For your convenience, Epson offers an optional HDBaseT transmitter box as a companion piece to the Pro G Series. Three inputs are featured for easy installation: HDMI, LAN and RS-232 to output into a CAT-5/6 cable.



HDCP 2.2 Support Over HDMI and HDBaseT

Pro G Series projectors support HDCP 2.2, the latest security protocol, designed to create an encrypted, secure connection between a source and a display.

Split Screen

Use the Split Screen⁷ feature to simultaneously project two images (video or still) side-by-side from two different sources. Choose from three layout options: 50-50 percent split screen; with the main image on the left; or with the main image on the right. You can swap the images, choose the source for the audio and even display closed captioning if the signal includes it.



Wireless Connectivity

Wirelessly connect — you can either connect to a wireless network (infrastructure) or to an ad hoc (peer-to-peer) wireless computer. Optional wireless module sold separately.

Management and Control



Epson EasyMP® Monitor tool

If you are searching for a solution that gives you control over your time, Epson network projectors with EasyMP Monitor capabilities can help. Epson network projectors contain built-in remote access, with no licensing fees added, to Epson Monitor software. These features also give you added control, and the ability to troubleshoot and monitor all Epson network projectors from any computer over a wired or wireless Ethernet network.

Additional features to assist administrators/help desk:

- Remote access and control through the network
- Remote monitoring of up to 1,024 Epson networked projectors
- View status, including input sources, power on/off, lamp life hours and more
- Preventative maintenance features including temperature levels and error alerts
- Schedule filter and lamp timer settings
- Email notification (SMTP) to send alerts to your handheld device
- Enterprise SNMP plug-in available

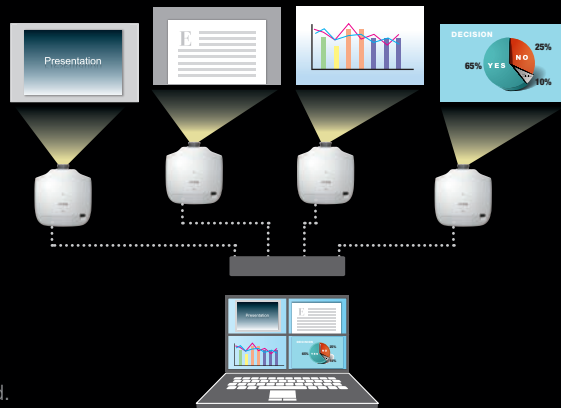
Network Projection — Content Over IP

Use EasyMP Network Projection to display your computer screen through the projector, via a network, for effective meetings, presentations and digital signage applications. You can use either wired or high-security wireless LAN connections and project the same or up to four different images on up to four projectors, or display a panoramic image.



Full Networkability

Epson network projectors can also be accessed from your browser via an internal webpage. Whether you assign a static IP address or enable DHCP, the projector becomes accessible once it's integrated in your network. The internal webpage lets you control items such as network configuration, projector settings and email alerts.



All projected images are simulated.

Message Broadcasting

This innovative feature enables you to broadcast customized images/alerts over the network for announcements or instructions. Messages can be sent to up to 1,024 projectors simultaneously and will overwrite the current screen content if the projector is being used, unless this function is disabled by the presenter. If the projector is off, Message Broadcasting will turn the projector on and then display the message.



Multi-PC Projection with Moderator

Epson's Multi-PC Projection with Moderator software⁸ allows you to simultaneously display up to four devices on the screen over the network (wired or wireless), with even more users connected to the same projector on Standby Mode. The moderator, from a PC or Mac[®], can drag and drop participants into or out of the four quadrants and control which device screens to display.

- Connect up to 50 Windows[®] and Mac devices, or iOS[®] and Android[™] devices running the Epson iProjection[™] App⁹
- Encourage and control collaboration; it's perfect for comparing ideas and content side by side



All projected images are simulated.

Product Details and Accessories



Pro G7500U (Top view)



Pro G7500U
(Product shown with lens)



Remote Control



Low Ceiling Mount
(ELPMB47)



High Ceiling Mount
(ELPMB48)

For additional mounting solutions, visit epson.com/largevenue

Product Specifications

Model	Pro G7000W/NL	Pro G7100/NL	Pro G7200W/NL	Pro G7400U/NL
Product Code	V11H752020	V11H754020	V11H751020	V11H762020
Replacement Lamp Code	V13H010L93	V13H010L93	V13H010L93	V13H010L93
Road Service Warranty	Limited warranty of 20,000 hours of usage or 3 years, whichever comes first (90-day lamp warranty), plus toll-free support.			
Free Next-Business-Day Replacement ⁵	Yes, ships to the U.S. and Canada. Arrives with a postage-paid return shipping label.			
Basics				
Color Brightness (Color Light Output) ¹⁰	6,500 lumens	6,500 lumens	7,500 lumens	5,500 lumens
White Brightness (White Light Output) ¹⁰	6,500 lumens	6,500 lumens	7,500 lumens	5,500 lumens
Native Resolution	WXGA	XGA	WXGA	WUXGA with 4K Enhancement ⁴
Contrast Ratio	Up to 50,000:1	Up to 50,000:1	Up to 50,000:1	Up to 50,000:1
Zoom Lens (Ratio)	1.0 – 1.6x Optical	1.0 – 1.6x Optical	1.0 – 1.6x Optical	1.0 – 1.6x Optical
Power Consumption (Normal/ECO)	540 W/498 W	540 W/498 W	601 W/498 W	601 W/498 W
Built-in Speaker	10 W Mono	10 W Mono	10 W Mono	10 W Mono
Split Screen ⁷	Yes	Yes	Yes	Yes
Edge Blending	Yes	Yes	Yes	Yes
Scheduling Function	Yes	Yes	Yes	Yes
LAN Networking & Control				
Wired	RJ-45 (Broadcasting)			
Wireless	Optional (802.11b/g/n)			
Message Broadcasting	Yes			
Multi-PC Projection	Yes			
Device Management Software (Moderator) ⁸	Yes			
Crestron RoomView Enabled	Yes			
Connections				
DVI-D	DVI-D x 1			
HDMI	HDMI x 1			
HDBaseT	HDBaseT x 1			
Analog Connections	5-BNC, VGA x 1			
Audio In	Mini Stereo x 3			
USB 2.0 Connectors	Type B x 1 (For Service Only) Type A x 1 (For Wireless Only)			
Monitor Out	Mini D-sub 15 pin x 1			
Serial Control	Network: RJ-45 x 1, 100 Mbps Serial: RS-232c x 1			
Recommended Accessory 1	HDBaseT Transmitter (V12H547020)			
Recommended Accessory 2	Replacement Air Filter (V13H134A30)			
Recommended Accessory 3	Wireless LAN Module (V12H731P02)			

Model	Pro G7500U/NL	Pro G7805/NL	Pro G7905U/NL
Product Code	V11H700020	V11H753120	V11H749120
Replacement Lamp Code	V13H010L93	V13H010L93	V13H010L93
Road Service Warranty	Limited warranty of 20,000 hours of usage or 3 years, whichever comes first (90-day lamp warranty), plus toll-free support.		
Free Next-Business-Day Replacement ⁵	Yes, ships to the U.S. and Canada. Arrives with a postage-paid return shipping label.		
Basics			
Color Brightness (Color Light Output) ¹⁰	6,500 lumens	8,000 lumens	7,000 lumens
White Brightness (White Light Output) ¹⁰	6,500 lumens	8,000 lumens	7,000 lumens
Native Resolution	WUXGA with 4K Enhancement ⁴	XGA	WUXGA with 4K Enhancement ⁴
Contrast Ratio	Up to 50,000:1	Up to 50,000:1	Up to 50,000:1
Zoom Lens (Ratio)	1.0 – 1.6x Optical	1.0 – 1.6x Optical	1.0 – 1.6x Optical
Power Consumption (Normal/ECO)	601 W/498 W	601 W/498 W	601 W/498 W
Built-in Speaker	10 W Mono	10 W Mono	10 W Mono
Split Screen ⁷	Yes	Yes	Yes
Edge Blending	Yes	Yes	Yes
Scheduling Function	Yes	Yes	Yes
LAN Networking & Control			
Wired		RJ-45 (Broadcasting)	
Wireless		Optional (802.11b/g/n)	
Message Broadcasting		Yes	
Multi-PC Projection		Yes	
Device Management Software (Moderator) ⁸		Yes	
Crestron RoomView Enabled		Yes	
Connections			
DVI-D		DVI-D x 1	
HDMI		HDMI x 1	
HDBaseT		HDBaseT x 1	
Analog Connections		5-BNC, VGA x 1	
Audio In		Mini Stereo x 3	
USB 2.0 Connectors		Type B x 1 (For Service Only) Type A x 1 (For Wireless Only)	
Monitor Out		Mini D-sub 15 pin x 1	
Serial Control		Network: RJ-45 x 1, 100 Mbps Serial: RS-232c x 1	
Recommended Accessory 1		HDBaseT Transmitter (V12H547020)	
Recommended Accessory 2		Replacement Air Filter (V13H134A30)	
Recommended Accessory 3		Wireless LAN Module (V12H731P02)	

Better Products for a Better Future™

eco.epson.com

Epson America, Inc.

3840 Kilroy Airport Way, Long Beach, CA 90806

Epson Canada Limited

185 Renfrew Drive, Markham, Ontario L3R 6G3

epson.com/largevenue

epson.ca/largevenue

- 1 Color brightness (color light output) measured in accordance with IDMS 15.4. Color brightness will vary depending on usage conditions. The projectors used by a third-party lab for measuring color brightness were leading Epson 3LCD business and education projectors and leading 1-chip DLP projectors, based on NPD sales data for June 2013 through May 2014 and PMA Research sales data for Q1 through Q3 2013.
- 2 Color brightness (color light output) measured in accordance with IDMS 15.4. Color brightness will vary depending on usage conditions. The projectors used by a third-party lab for measuring color brightness were leading Epson 3LCD projectors and leading 1-chip DLP projectors, based on NPD sales data for June 2013 through May 2014 and PMA Research sales data for Q1 through Q3 2013.
- 3 Data source: ProjectorCentral.com, Feb. 2015. Average of 1420 shipping models for which the manufacturers provided lumens and total power data, all resolutions and brightness levels. Energy efficiency was measured as wattage per lumen. It was measured for both 3LCD and 1-chip projectors in each of six brightness segments. 3LCD projectors averaged less required electricity per lumen in each of the six segments.
- 4 4K Enhancement Technology shifts each pixel diagonally by 0.5 pixels to double the resolution to 3840 x 2160 and surpass Full HD image quality.
- 5 Expedited shipping not available in all areas. Road Service orders must be in by 3 p.m. Eastern Time for Next-Business-Day delivery.
- 6 Emulation Mode is limited to certain code sets and may not support all codes. Contact Epson Support for the latest supported sets.
- 7 Consult your user manual for input combinations.
- 8 Moderator feature is part of EasyMP Multi-PC Projection software.
- 9 To use Epson iProjection, the projector must be configured on a network. Epson projectors can be networked either through the Ethernet port on the projector (check model specifications for availability) or via a wireless connection. Check your owner's manual to determine if a wireless LAN module must be purchased separately to enable wireless connection on your Epson projector. Not all Epson projectors are able to be networked. Availability varies depending on model.
- 10 Color brightness (color light output) and white brightness (white light output) will vary depending on usage conditions. Color light output measured in accordance with IDMS 15.4; white light output measured in accordance with ISO 21118.